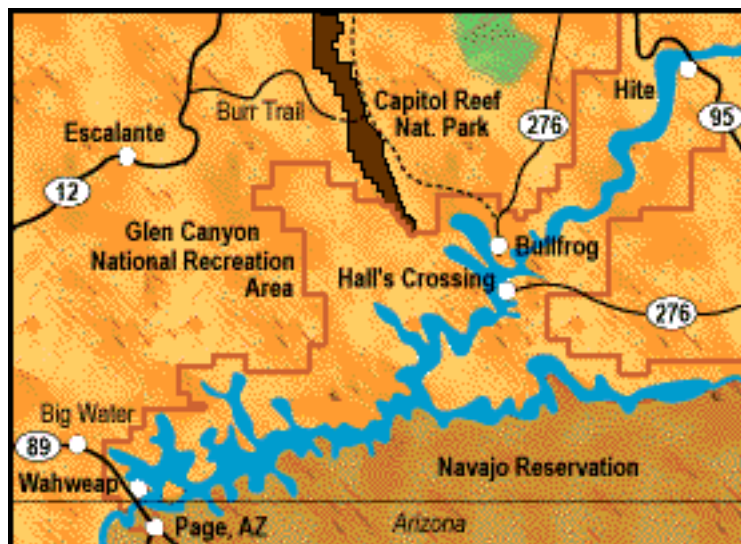




## Lake Powell

For hundreds of thousands of years the Colorado River roared through Glen Canyon carving a tremendous canyon through the sandstone. In 1963 the Glen Canyon dam was completed and impounded the Colorado, turning the wild beauty of Glen Canyon into popular Lake Powell -- a vast body of deep blue water contained within orange-red cliff walls.



Lake Powell offers excellent opportunities for boating, fishing, and in summer when water temperatures climb to a comfortable 70-80 degrees, swimming and water skiing. Its myriad side canyons narrow to just a boat width as they twist away from the main channel and make for fascinating exploration. Many visitors are content to just cruise its waters by houseboat and spend nights on its beaches under the stars. Hiking from the lake into the very rugged environs of Glen Canyon Recreation Area is an option for the adventurous.

Lake Powell covers a large area in south central Utah. Its 1,960 miles of shoreline (more than the United States' entire west coast) stretch 180 miles northeast from the Utah/Arizona border. Three highways provide access at four different points. At each access point is a marina.

	<u>Page</u>
● <a href="#">Water Recreation</a> .....	2
● <a href="#">Fishing</a> .....	5
● <a href="#">Other Things to Do</a> .....	6
● <a href="#">Lodging/Dining</a> .....	8
● <a href="#">Camping</a> .....	11
● <a href="#">Practicalities</a> .....	13
● <a href="#">Publications</a> .....	16

## Water Recreation

Presented below is information on:

- Water Activities
- Outfitters who rent boats
- the Marinas
- some Special Notes



### WATER ACTIVITIES

#### Boating

At each of the four main access points to Lake Powell is a marina. Of the four, Wahweap Marina, on Hwy. 89 near the town of Page, AZ, is the largest and most popular. Hite Marina at the lake's northernmost reach is the most quiet. All of the marinas rent houseboats, speedboats, wave runners and fishing boats, as do outfitters in Page, AZ and Big Water, Utah. (Names of outfitters are listed below.) Those with their own boats can put in at any of the marinas and at the Utah/Arizona state line about a mile north of Wahweap Marina.

Houseboats are the most popular way to explore the lake. Not only do they provide a comfortable way to cruise and explore, but they also provide an easy way to spend the night on the lake. A variety of styles are available from 36' to 59'. Speedboats will get you around faster and enable you to explore some of the narrower finger canyons. If you're not planning on venturing too far from the marinas, small skiffs for fishing are a cheap alternative to get out on the lake. Houseboaters often rent a wave runner, speed boat or fishing boat to tow behind to explore narrow finger canyons, pull skiers or fish.

Price ranges during the summer for the various alternatives are set out below. rates are significantly lower from Oct. to Apr. Package deals with lodging are also available.

	<u>1 Day</u>	<u>2-3 Days</u>	<u>1 Week</u>
● Houseboat	---	\$850-2,140	\$1,525-4,225
● Speed Boat	\$200-325	---	---
● Fishing Boat	\$90-120	---	---
● Wave Runner	\$180-210	---	---

For those looking to get out on lake just a short time, scenic boat tours are available out of Wahweap, Bullfrog and Hall's Crossing marinas. These typically cruise the lake for a few hours to give passengers a taste of the scenery. Some travel up to Rainbow Bridge National Monument, the largest freestanding natural bridge in the world. (Select [Other Things to Do](#) for information on Rainbow Bridge.) Half-day trips cost \$63; full-day trips with lunch cost \$87, with discounts for children.

## Sailing

Most of the lake is not very good for sailing because of the distortion in winds caused by the high canyon walls, but the larger open expanses of Wahweap Bay, Padre Bay and Bullfrog Bay provide decent opportunities. Winds in these areas are generally pretty steady, and typically heavy in spring.

## Water Skiing

Water skiing is permitted in most places on the lake. Skiing past sheer cliff walls is a thrill though you're safer sticking to open areas of the main channel. You can rent ski equipment from any of the boat rental outfitters (around \$20 a day). Boats pulling skiers must have at least two occupants and a red flag to raise when the skier is down. You can also rent kneeboards, wakeboards and ski tubes.

## Swimming

The water temperature reaches the upper 60's by late spring and mid-70's in summer. Once you have established that no underwater obstacles pose a danger, diving from rocks and cliffs along the shore is fun. (To be safe, go feet first to start.) There is also a public swimming beach just north of Wahweap Marina and near Bullfrog Marina.

## The Marinas

There are 4 land-based marinas on the lake -- Wahweap, Bullfrog, Halls Crossing and Hite -- and one floating marina accessible only by boat -- Dangling Rope. Each has boat pump-out facilities, fuel docks, public restrooms, lodging and a small store with food, beverages, ice, firewood, tackle and fishing licenses. Each of the land-based marinas rents boats and have launch ramps and slips. Wahweap, Bullfrog and Halls Crossing also perform boat repairs.

Lake Powell Resorts and Marinas is the concessionaire that runs all the marinas. It can be contacted at Box 56909, Phoenix, AZ 85079; 800-528-6154. Contact any individual marina at:

Bullfrog Marina	Hwy 276	435-684-3000
Halls Crossing Marina	Hwy 276	435-684-7000
Hite Marina	Hwy. 95	435-684-2278
Wahweap Marina	Hwy. 89	520-645-2433



## **BOATING OUTFITTERS**

In addition to the marinas, identified below are outfitters in towns near the lake that rent watercraft.

**Page, AZ** is located 4 miles south of Wahweap Marina on Hwy. 89.

Desert Service		520-645-9164
Doo Powell Watercraft Rentals	130 6th St.	800-350-1230
High Image Marine Center	920 Hemlock	520-645-9323
Lake Powell Rentals	84 South 7th Ave.	520-645-3509
Old West Marine Service	918 Vista	520-645-8141
Outdoor Sports	861 Vista	520-645-8141

**Big Water** is a tiny town located 8 miles north of Wahweap Marina on Hwy. 89.

Skylite Boat Rentals	Hwy. 89	435-675-3795
----------------------	---------	--------------

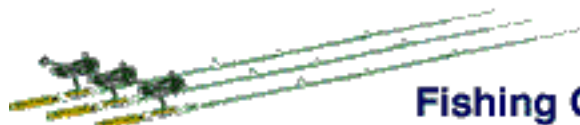
## **Special Notes**

- A common mistake boaters make is to misjudge the size of the lake. It is 95 miles from Wahweap Marina to Bullfrog Marina. It will take a typical houseboat [9 hours] to cover this distance directly, lots longer if any exploring of canyons is done. Plan accordingly.
- You should also be aware that storms with high winds can come up very quickly (usually late afternoon) and produce high waves and dangerous gusts. If the skies threaten, think about moving towards a lee (wind protected) shore.

## Fishing

Lake Powell has excellent fishing. Its waters hold large populations of bass -- striped, largemouth and smallmouth -- and walleye. Panfish such as black crappies, green sunfish and bluegills are also numerous (though the population of crappies has been in decline). Channel catfish can also be caught. Unfortunately, the rainbow trout, brown trout and northern pike that once inhabited Lake Powell are gone.

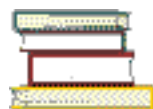
Both Arizona and Utah state agencies regulate fishing on Lake Powell. A license is required from the state in whose waters you will be fishing and can be purchased at any of the marinas. They'll have information on specific regulations.



### Fishing Outfitters

Fishing boats (and equipment) can be rented at each of the marinas and from outfitters in Page, AZ. These are listed on the [Water Recreation](#) page. Listed below are guides who lead single and multi-day trips.

Ambassador Guide Service	Box 735 - Page, AZ	800-256-7596
Arizona Reel Time	Box 169 - Page, AZ	800-533-7337
Bubba's Guide Service	Box 3778 - Page, AZ	520-645-5785
Lake Powell Charter	Box 2262 - Page, AZ	520-645-5505



### HELPFUL PUBLICATIONS

For additional information on fishing in Lake Powell, check out [Lake Powell-Publications](#).

## Other Things to Do

Presented below is information on:

- Rainbow Bridge National Monument
- Glen Canyon Dam
- Hiking around Lake
- Rafting on the Colorado River



Rising 290 feet above Bridge Creek and spanning 270 feet, Rainbow Bridge is the largest natural bridge in the world. Its symmetry and smooth salmon-colored Navajo sandstone make it arguably the most beautiful bridge also.

Rainbow Bridge is located at the end of a finger canyon, 50 miles up lake from Wahweap Marina and about 45 miles down lake from Bullfrog and Hall's Crossing marinas. Boaters can tie up a few hundred yards from the bridge and hike to its base. Tour boats from Wahweap, Bullfrog and Hall's Crossing marinas also take passengers to see it. Half-day trips cost \$63; full-day trips with lunch cost \$87, with discounts for children. Rainbow Bridge can also be hiked to on a few trails accessible from roads through the Navajo Reservation in Arizona.

### Glen Canyon Dam

Glen Canyon Dam is immense. It rises 710 feet above the Colorado River bedrock with a 1,560 foot long crest. It is 300 feet thick at the base and holds back some 9 trillion gallons of water. Completed in 1963, Lake Powell only reached its full level 17 years later in 1980.

The Carl Heyden Visitor Center at the dam provides information about the dam (and Lake Powell). It is opened every day from 8 to 5 except Christmas and New Years Day, with extended hours in summer. Both guided and self-guided tours can be taken.

The Glen Canyon Dam is located just south of the Utah/Arizona border where Hwy. 89 crosses the Colorado River. It is about 2 miles north of Page, Arizona. (The bridge crosses 700 feet above the river and is the second highest bridge in the country.)



Surrounding Lake Powell is the Glen Canyon National Recreation Area and, on a portion of its southern border, the Navajo Indian Reservation. Within these areas lie some great hiking opportunities in an extremely rugged and remote setting. Both short trips near the lake to arches, balanced rocks and Indian petroglyphs, and longer overnight adventures into the wilderness are available. For more information, select [Lake Powell - Publications](#) or contact the Glen Canyon NRA office at 520-608-6404.

## River Float Trips

Below the dam is the only remaining natural section of the Colorado River through Glen Canyon. Tall cliff walls rise above the river as it smoothly cuts its way towards the Grand Canyon. Full- and half- day float trips (\$45-65) down this attractive portion of the river are offered by:

Wilderness River Adventures    Box 717 - Page, AZ    800-992-8022

## Lodging/Dining

Presented below is information on lodging and dining:

- On Lake Powell
- in Page, AZ
- in Big Water, Fry Canyon and Ticaboo

### On Lake Powell

#### Lodging

Overnight accommodations are available at each of the four marinas (and Lake Powell Motel near Wahweap Marina).

Bullfrog Defiance House Lodge	435-684-3000	56 rooms	\$100-110
Halls Crossing Family Units	435-684-7000	20 units	\$150
Hite Family Units	435-684-2278	4 units	\$150
Wahweap Lodge	520-645-2433		\$140-150
Lake Powell Motel	520-645-2477		\$77

Reservations are recommended during the summer. You can call each directly or contact Lake Powell Resorts & Marinas, Box 56909, Phoenix, AZ 85079; 800-528-6154.

#### Dining

All of the marinas sell groceries, firewood and other supplies for campers. Both Wahweap and Bullfrog have fast food restaurants and the following nicer restaurants.

- Rainbow Room of Wahweap Lodge 520-645-2433 Large tiered dining room overlooking the lake
- Anasazi Restaurant at Bullfrog Marina 435-684-3000 Panoramic views of Bullfrog Bay and Henry Mountains

You might also consider a sunset dinner cruise on the 95-foot Canyon King paddlewheel riverboat. Cruises last 2-1/2 hours and depart from Wahweap Marina. Call Wahweap Lodge at 520-645-2433 for reservations and information.

### Page, AZ

Page, AZ has a good selection of motels, lots of fast food and some restaurants. It is located on Hwy. 89, 4 miles south of Wahweap Marina.

#### Motels

Lake Powell Lodging and Dining Information

Bashful Bob's	720 S. Navajo; Box 2990	520-645-3919
Best Western Arizona Inn		800-826-2718
Best Western Lake Powell	208 N. Lake Powell; Box 4899	520-645-5988
Best Western Weston Inn/Suites	207 N. Lake Powell; Box 1746	520-645-2451
Comfort Inn	649 S. Lake Powell; Box 4450	520-645-5858
Courtyard by Marriot	600 Country Club Dr.; Box 4128	520-645-5000
Econo Lodge	121 S. Lake Powell Blvd.	800-55-ECONO
Empire House	100 S. Lake Powell Blvd.	520-645-2406
Holiday Inn		520-645-8851
Holiday Inn Express	751 S. Navajo; Box 4450	520-645-9000
KC's Adobe	126 8th Avenue; Box 294	520-645-2947
Lake Powell Int'l Hostel	141 8th St.; Box 1077	520-645-3898
Lake Powell Motel	North Hwy. 89; Box 1597	520-645-2477
Lake Powell Pension	141 8th St.; Box 1077	520-645-3898
LuLu's Sleep Ezze Motel	105 8th St.; Box 2583	800-553-6211
Page Boy	150 N. Lake Powell Blvd.; Box 1747	520-645-2416
Ramada Inn	287 N. Lake Powell Blvd.; Box 1867	520-645-8851
Red Rock Motel	114 8th. Ave.; Box 2686	520-645-0062
Super Eight	75 7th. St.; Box 4450	520-645-2858
Uncle Bill's	115 8th St.; Box 4101	520-645-1224

**B&B's**

A Place Above the Cliff		520-645-3162
Amie Ann's B&B	Box 2262	520-645-5505
Antique Arbor B&B	Box 3172	520-645-9518
Break-a-Way B&B		520-645-3883
Canyon Colors B&B	Box 3657	800-536-2530
Captain's Rest B&B		520-645-2342
Eddie's B&B	Box 3701	520-645-3672
Hibbert Homestay		520-645-9690
Ott's B&B		520-645-3922
Thatcher's B&B	Box 421	800-645-6836
Kocjan Rentals	112 North 9th; Box 478	520-645-2120
Lake Powell Suites	North Hwy. 89; Box 5054	800-525-3189
Lake Powell View	North Hwy. 89; Box 5254	800-801-6119
Linda's Lake Powell Condos	North Hwy. 89; Box 1258	800-462-7695

**Condos**

Kocjan Rentals	112 North 9th; Box 478	520-645-2120
Lake Powell Suites	North Hwy. 89; Box 5054	800-525-3189
Lake Powell View	North Hwy. 89; Box 5254	800-801-6119
Linda's Lake Powell Condos	North Hwy. 89; Box 1258	800-462-7695

## Dining in Page

**list to come**

## **Big Water, Fry Canyon and Ticaboo**

Big Water is located on Hwy. 89, 9 miles north of Wahweap Marina. Fry Canyon is located on Hwy. 95, about 25 miles south of Hite Marina. Ticaboo is located on Hwy 276, 12 miles north of Bullfrog Marina.

Highway Host Motel	S. Hwy 89 - Big Water	800-748-5034	40 rooms	\$\$
Warm Creek Motel	S. Hwy. 89 - Big Water	800-748-5065	39 rooms	\$\$
Fry Canyon Lodge & Cafe	Hwy 95 - Fry Canyon	435-979-4298	6 rooms	\$\$-\$\$\$
Ticaboo Lodge	Highway 276 - Ticaboo	800-987-5253	72 rooms	\$\$-\$\$\$

## Camping

Presented below is information on:

- Camping at the Marinas;
- Public Campgrounds around the Lake;
- Dispersed Camping around the Lake; and
- Private Campgrounds Near the Lake.

### Camping at the Marinas

A concessionaire operates modern RV Parks at Wahweap, Hall's Crossing and Bullfrog marinas. Each has modern restrooms; coin showers; hookups; disposal facilities; laundry facilities and are open year round. Reservations are recommended in summer and can be made by calling Lake Powell Resorts and Marinas at 800-528-6154. Sites cost \$23 for 2 persons/\$3 each additional person over 6 years old.

Wahweap RV Park	116 sites
Painted Hills RV Park - Bullfrog	24 sites
Village Center RV Park - Halls Crossing	26 sites

There are also more primitive campgrounds at these marinas. Each campground has vault toilets and drinking water. They are available on a first-come, first-serve basis and cost \$12 per night. The coin showers and laundry facilities at the nearby RV Parks can be used by campers at each of these campgrounds.

### Public Campgrounds around the Lake

The National Forest Service operates several primitive campgrounds around the lake.

- Lone Rock Campground is located in Utah just off Hwy. 89, 6 miles northwest of Wahweap Marina. It is set in the open desert near the lake with little shade. open sites; vault toilets; first-come, first-serve; no fee.
- Open camping areas are available near Hite Marina. on a first-come, first-serve basis at no charge. A few picnic tables are scattered about. There is no water or other amenities but you can use the facilities at the marina.
- Warm Creek, Bullfrog Bay, Farley Canyon, Stanton Canyon are primitive camping sites located around the lake. (See Lake Powell SuperMap for locations.) Each has vault toilets and is free.

## Dispersed Camping around the Lake

Camping is permitted anywhere along the shore except within a mile of any the marinas, Lees Ferry or Rainbow Bridge. The most feasible camping sites are along the main channel. There are some smaller, more secluded sites within some of the finger canyons, but they are few in number. Camping is also allowed away from the lake in the Glen Canyon National Recreation Area if you care to hike.

Fires are permitted, but all remnants, burned or otherwise, must be disposed of at a marina disposal site. Firewood is scarce around the lake but can be purchased at any of the marinas. Lake water should be treated before drinking. If you camp within 1/4 mile of the lake, you must carry or have on your boat a portable toilet. No permits are necessary.



## PRIVATE CAMPGROUNDS

There are a few private campgrounds around the lake.

Fry Canyon Lodge & Campground	Hwy 95 - 25 mi. so. of Hite Marina	435-979-4298	
Page/Lake Powell Campground	849 Hwy. 89 near Page, AZ	520-645-3374	
Bullfrog Trailer Park	Hwy 276 near Bullfrog Marina	435-684-2212	16 sites
Ticaboo RV Park	Hwy 276 in Ticaboo	435-	26 sites

## Practicalities

Provided below is information on:

- Getting There
- When to Go/Climate
- Recreation Area Details
- Useful Addresses/Numbers
- Miscellany



### **GETTING THERE**

#### **By Car or RV**

Lake Powell is located in southern Utah along the Arizona border. It is 180 miles long and covers about 2,000 square miles. Three highways lead to the four marina access points on the lake. The maps below will help you plan your route and get oriented.

- Utah
- Southwest Utah
- Lake Powell SuperMap

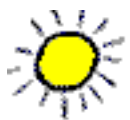
#### **By Plane**

Scenic Airlines (800-245-8668) has flights from Las Vegas to Page. Charter flights to Page and Bullfrog from Salt Lake City are also available. You can get to Wahweap Marina from Page by cab or a shuttle operated by Wahweap Marina (520-645-2433).

#### **Rental Cars**

Rental cars are available in Page from:

Avis Rent-a-Car	Airport	800-331-1212
Budget	Airport	800-527-0700



## WHEN TO GO/CLIMATE

Lake Powell can be visited in any season. Summers are of course most popular as water temperatures reach into the mid 70's. Mornings are generally clear and calm, while afternoons often see winds kick up for short periods and sometimes rain. It's generally hot, but you're on the water. Though there are often heavy winds, the spring spawning makes for the best fishing of the year. Fall is almost always clear and bright. Boaters (mostly fishermen) use the lake in winter, which does not freeze except at its northernmost point.

Average daily air temperatures and water temperatures are:

	<u>Jan.</u>	<u>Feb.</u>	<u>Mar.</u>	<u>Apr.</u>	<u>May</u>	<u>Jun.</u>	<u>Jul.</u>	<u>Aug.</u>	<u>Sep.</u>	<u>Oct.</u>	<u>Nov.</u>	<u>Dec.</u>
High	45	53	61	72	82	90	97	94	88	77	59	45
Low	24	31	36	43	53	62	71	69	61	50	38	25
Water	46	46	54	54	64	71	78	79	74	67	61	51



## PARK DETAILS

There is a \$5 entrance fee per vehicle, \$10 for one boat and \$4 for each additional boat. Annual Passes are also available, call 520-608-6404 for details. There is no charge for those with a National Park Pass.

The Carl Hayden Visitor Center is located at the dam between Wahweap Marina and Page, AZ. It is opened daily 7-7 from Memorial Day to Labor Day and 8-5 the rest of the year. It is closed Thanksgiving, Christmas and New Years.

There is also a visitor center at Bullfrog Marina. It is open daily 8-5 from March to October and on weekends in November. It is closed the rest of the year.



## USEFUL ADDRESSES & PHONE #'S

Glen Canyon National Rec. Area	Box 1507 - Page, AZ	520-608-6404
Lake Powell Resorts & Marinas	Box 56909 - Phoenix, AZ 85079	800-528-6154
Color Country Travel Region	Box 1550 - St. George	800-233-8824
Kane County Travel Council	78 S. 100 East, Box 728 - Kanab	435-644-5033

Page Chamber of Commerce	644 N. Navajo Rd.; Box 727 - Page, AZ	888-261-PAGE
Navajo Tourism Department		520-871-6636
Escalante Ranger Dist. - Dixie Nat. For.	270 W. Main St.; Box 246 - Escalante	435-826-4221



### Outdoor Gear

Stix Market	5 S. Lake Powell Blvd.	520-645-2891
Wahweap Marina Store		520-645-1414

### Miscellaneous Outfitters

Photographic Tours		435-675-9109	photo tours
Scenic Air	Page Airport	800-245-8668	scenic flights

### Religious Services (in Page, AZ)

Church of Latter Day Saints	1500 12th Ave.	520-645-9660
First Assembly of God	263 S. Lake Powell Blvd.	520-645-8161
First Baptist Church	263 S. Lake Powell Blvd.	520-645-3353
First Southern Babtist Church	413 S. Lake Powell Blvd.	520-645-5416
Immaculate Heart of Mary Catholic	455 S. Lake Powell Blvd.	520-645-2301
Jehovah's Witnesses	706 Oak St.	520-645-9544
Page Community United Methodist	291 S. Lake Powell Blvd.	520-645-2881
Sheppard of the Desert Lutheran	331 S. Lake Powell Blvd.	520-645-9398
St. David's Episcopal	421 S. Lake Powell Blvd.	520-645-9533

## Publications

Presented below are publications that provide coverage of Lake Powell and surrounding areas. Publications are listed alphabetically under the following categories.

- General Interest
- Fishing
- Hiking
- 4wd Adventuring
- Camping

### General Interest

- **Boater's Guide to Lake Powell Boat** -- Michael Kelsey

Describes the many canyons of Lake Powell with info on boating, hiking, camping, geology, history and archeology. Uses metric system only. (288 pages; Kelsey Publishing; 1991: \$13.95)

[Back Order:](#)  
BOOKS, MUSIC & MORE  
**amazon.com**

---

- **Boating and Exploring Map: Lake Powell and its 96 Canyons** -- Stan Jones



Large map crammed full of information on boating, fishing, hiking, camping, etc. (Sun Country Publications; 1985)

---

- **Dowler's Lake Powell Boat & Tour Guide** -- Louise Bishop Dowler

[Out-of-Print Order](#)  
BOOKS, MUSIC & MORE  
**amazon.com**

### Fishing

- **Fishin' Lake Powell** -- Stan Jones and Bob Hirsch

Information on where to catch 'em at Lake Powell. (96 pages; Sun Country Publications)

## Hiking

- **Hiking Utah** -- Dave Hall and Ann Seifert



Descriptions of 80 hikes throughout Utah from beginner to advanced. Black & white photos and maps. (245 pages; Falcon Press; 1996; \$12)

[Order now from:](#)  
BOOKS, MUSIC & MORE  
**amazon.com**

## 4wd Adventuring

- **Utah Byways: Backcountry Drives for the Whole Family** -- Tony Huegel



Descriptions with maps of 60 routes throughout Utah. (176 pages; Post Company; 1996: \$13.50)

[Order now from:](#)  
BOOKS, MUSIC & MORE  
**amazon.com**

## Camping

- **Utah & Nevada Camping** -- Gayen/Tom Wharton and Deke Castleman



Comprehensive guide to campgrounds in Utah and Nevada. Provides all the information you need. Note, however, a fair amount of details change in a year's time. (380 pages; Foghorn Outdoors; 1997; \$15.16)

[Order now from:](#)  
BOOKS, MUSIC & MORE  
**amazon.com**